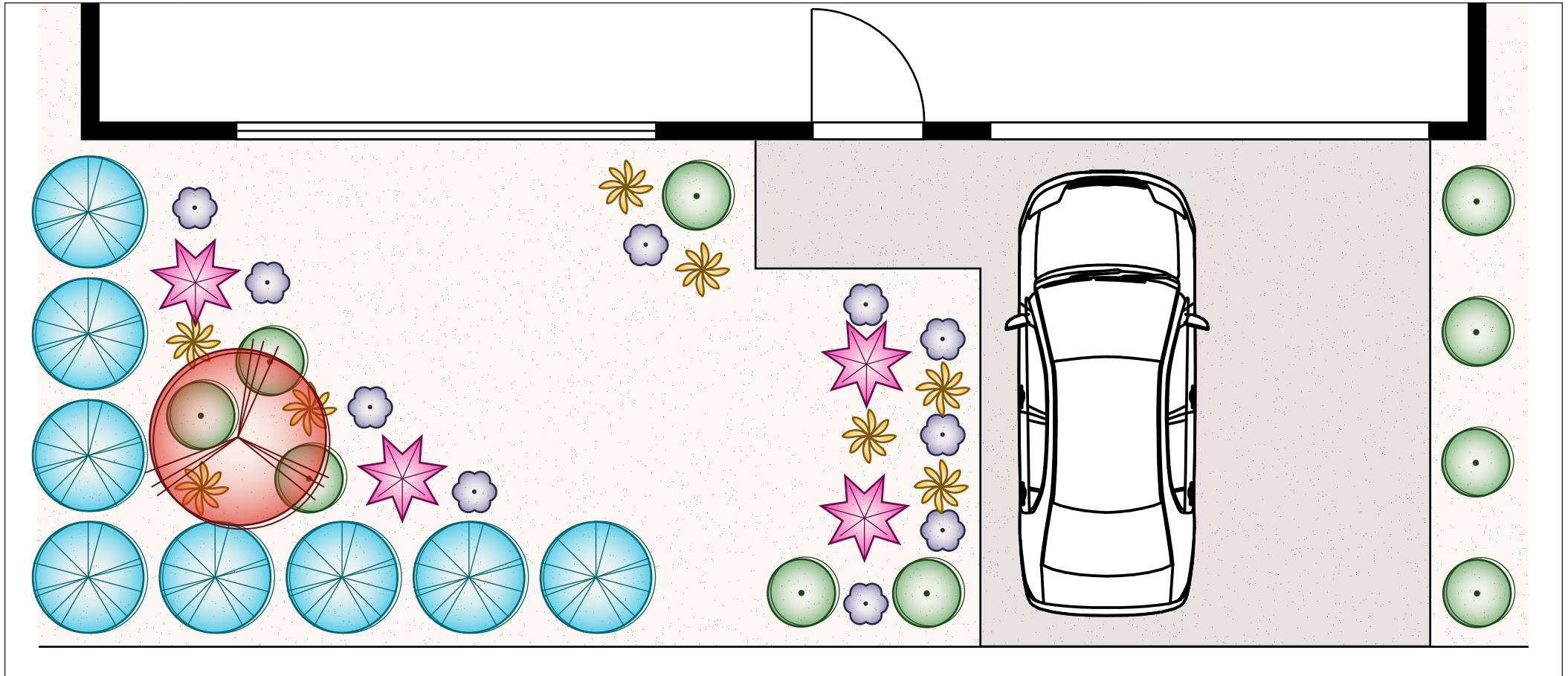


Tropical Garden Plan A (41 Plants)


Suitable for Frontages 8m – 14m | Difficulty Rating ★★☆☆☆ | Moderate Maintenance | Moderate Water Consumption



1  Feature Trees x 1

3  Shrubs x 10

5  Ground Covers x 10

2  Hedging and Screening x 8

4  Grasses x 8

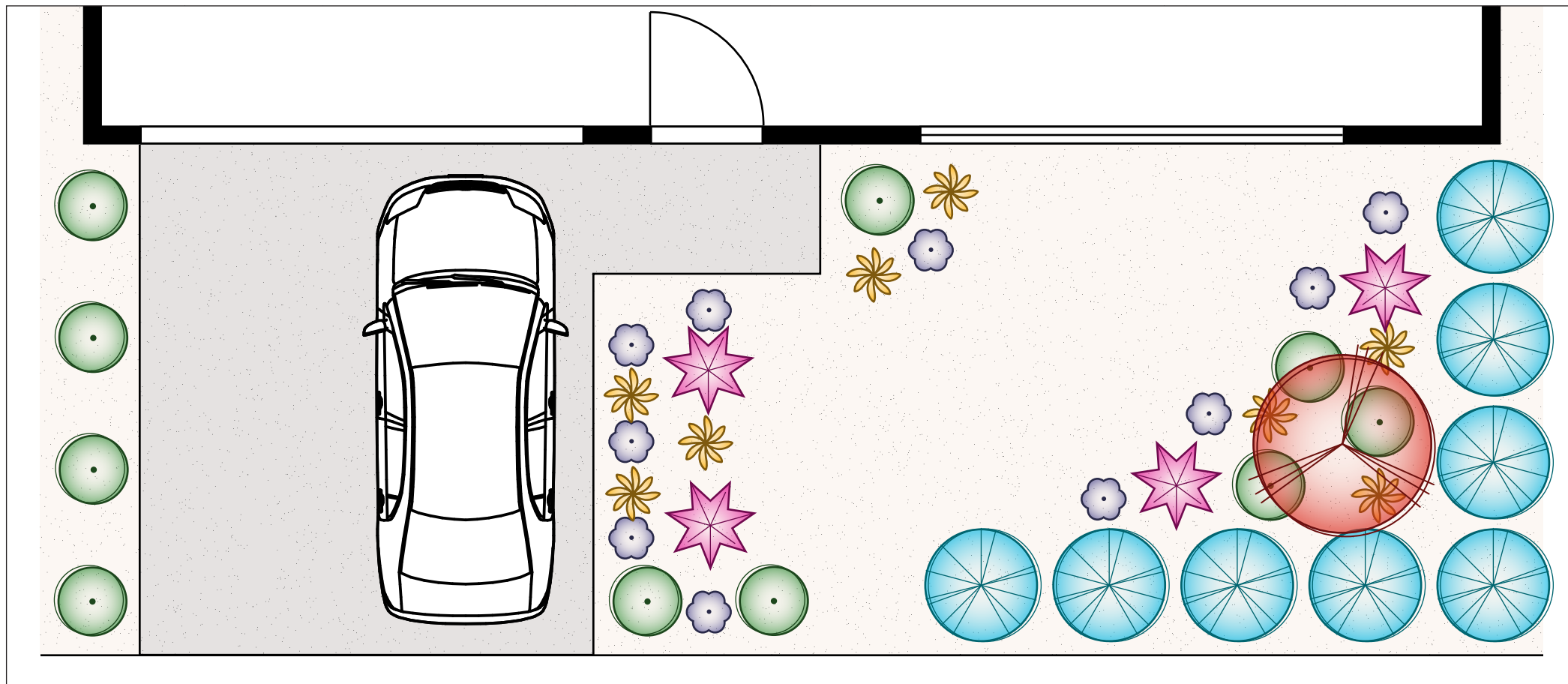
6  Accent Plants x 4

These plans are conceptual only and are regarded as non-site specific. They are intended as a guide and not for construction. All measurements must be verified on site.

All construction must be engineered to council specifications and standards with the sole responsibility placed on the party performing the construction.

Tropical Garden Plan A (41 Plants)


Suitable for Frontages 8m – 14m | Difficulty Rating ★★☆☆☆ | Moderate Maintenance | Moderate Water Consumption



1  Feature Trees x 1

3  Shrubs x 10

5  Ground Covers x 10

2  Hedging and Screening x 8

4  Grasses x 8

6  Accent Plants x 4

These plans are conceptual only and are regarded as non-site specific. They are intended as a guide and not for construction. All measurements must be verified on site.

All construction must be engineered to council specifications and standards with the sole responsibility placed on the party performing the construction.